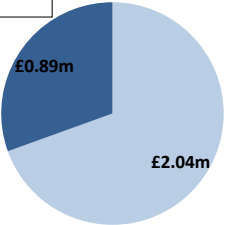


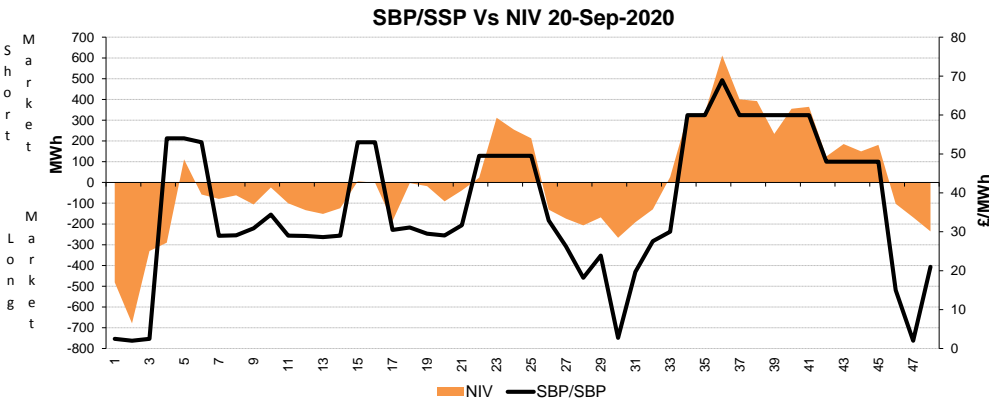
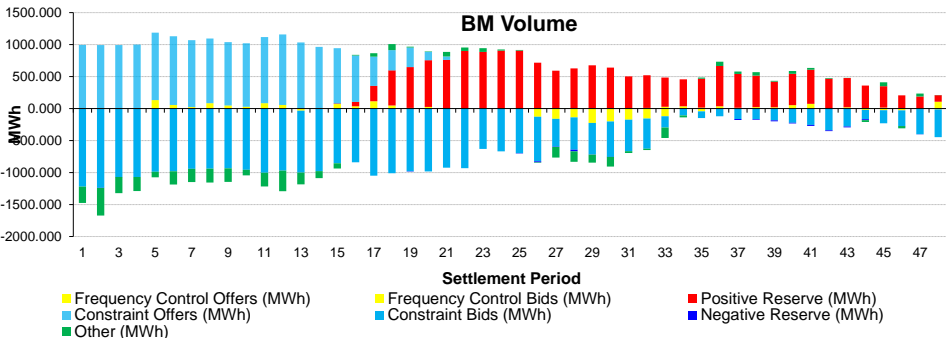
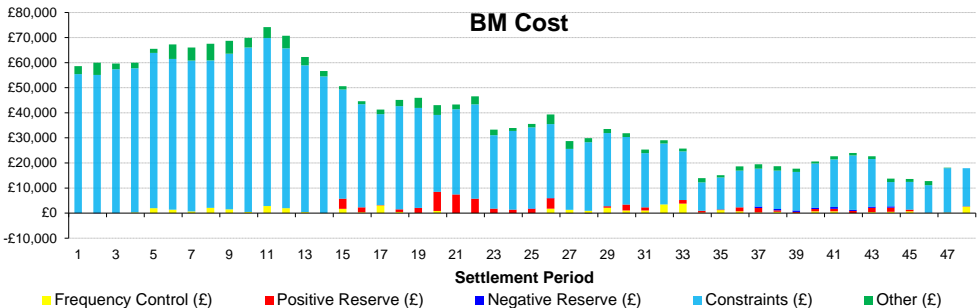
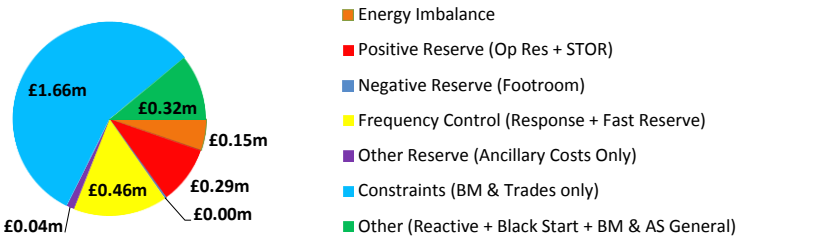
Date: Sunday 20 Sep 2020

BSUoS Charge Estimate: £2.99/MWh
Total Outturn: £2.93m

BM Cost (Indicative)
AS Cost (Estimate)



Daily Balancing Costs



Western Link status: Available

Commentary

The market position varied through the day. BM Actions were taken overnight for margin.

Scottish wind constraints became active at 6:30pm and increased at 8:30pm. Constraints were also active in the north east of England combined with interconnector trades for RoCoF. Trades and BM Action were also needed for voltage management.